


# Visual Paradigm product adoption roadmap

## Visual Paradigm Suite

 Visual Paradigm  
for **UML**  
Model-Code-Deploy Platform

 **Business Process**  
**Visual ARCHITECT**  
Easy and Intelligent Business  
Process Modeler

 Visual Paradigm  
**SDE**  
Streamlined Design and  
Development Environment

 **Database**  
**Visual ARCHITECT**  
Access Database with Object-  
Oriented Technology

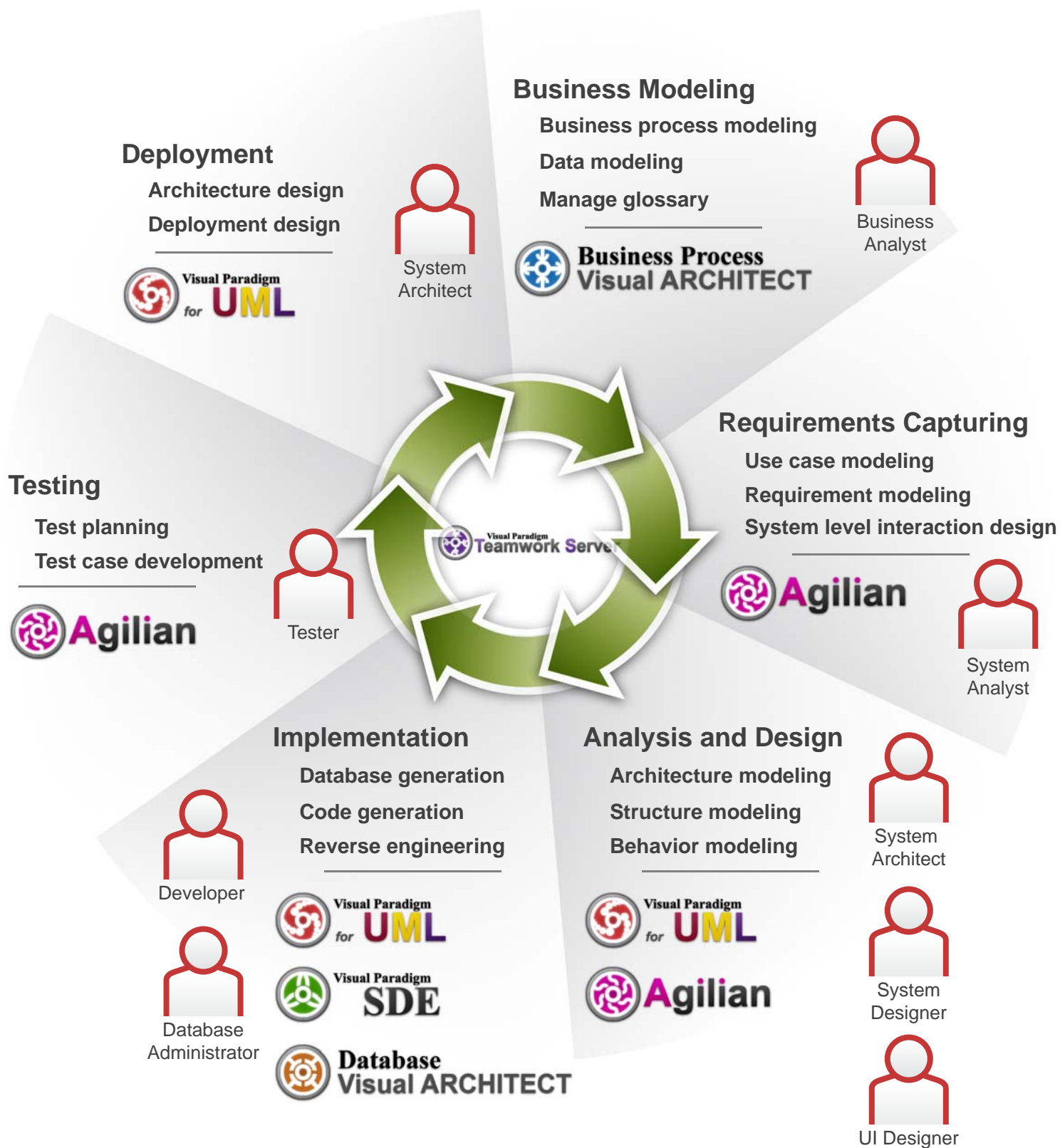
 **Agilian**  
Necessity for Agile Modeling

 Visual Paradigm  
**Teamwork Server**  
Develop Software in Collaborative  
Way



# Visual Paradigm product adoption roadmap

## Build Quality Software Faster, Better and Cheaper



# Visual Paradigm product adoption roadmap



## Business Process Visual ARCHITECT Analyst Edition

Unit price: US\$ 199 or US\$ 238.5 with 1 year maintenance

Business modeling tool designer for visualizing, understanding, analyzing, improving and documenting business processes, document flows and information in your organization.



## Agilian Simulacian

Unit price: US\$ 999 or US\$ 1,198.5 with 1 year maintenance

Boundary-free modeling tool for agile modeling team to design, present and communicate with software design effectively.



## Visual Paradigm for UML Professional Edition

Unit price: US\$ 699 or US\$ 838.5 with 1 year maintenance

UML modeling tool supports the latest version of UML, SysML and ERD for developers to perform requirement capturing, system analysis, system design, code generation, database generation and documentation generation.



## SDE Professional Edition for Eclipse

Unit price: US\$ 699 or US\$ 838.5 with 1 year maintenance

Generates executable object persistent layer which works with Hibernate. The object persistent layer includes Java source code, database schema (DDL) and Hibernate mapping.



## Database Visual ARCHITECT Java Edition

Unit price: US\$ 399 or US\$478.5 with 1 year maintenance

Database and UML class diagram tool for database administrators and application developers to design application, generate code and generate database.



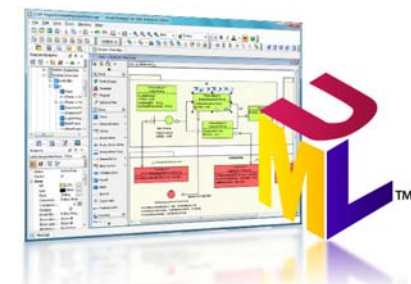
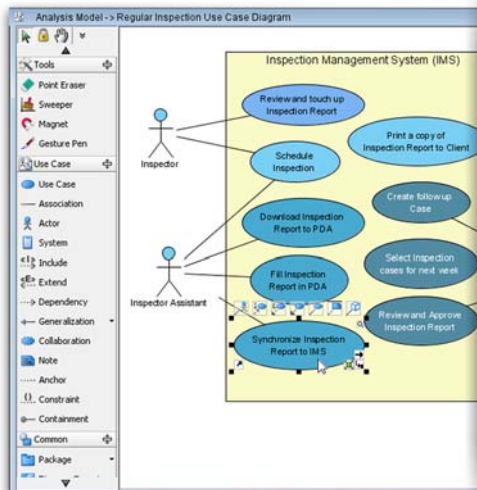
## Visual Paradigm Teamwork server

Unit price: US\$ 699 or US\$ 838.5 with 1 year maintenance

Keep all changes in central repository and perform modeling collaboratively and concurrently. Manage milestones and releases with branching and tagging features.

# Visual Paradigm product adoption roadmap

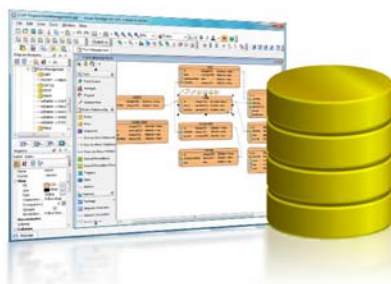
## What Visual Paradigm Provides?



**UML Modeling**  
 Draw UML 2.2 diagrams. Document use case with flow of events editor and generate activity diagram.



**Business Process Modeling**  
 Visualize business workflow by BPMN business process diagram and process map. Generate BPEL.



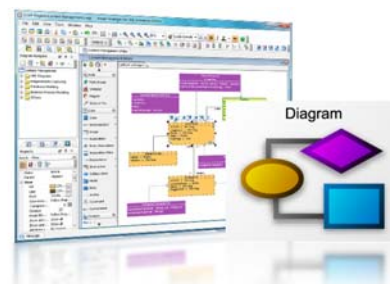
**Database Modeling**  
 Design database with entity relationship diagram. Generate and sync. with UML class diagram.



**Requirement Modeling**  
 Capture system requirements with use cases, SysML requirement diagrams and textual analysis.

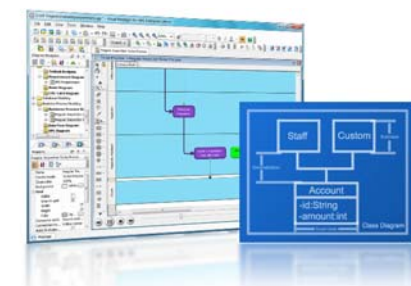
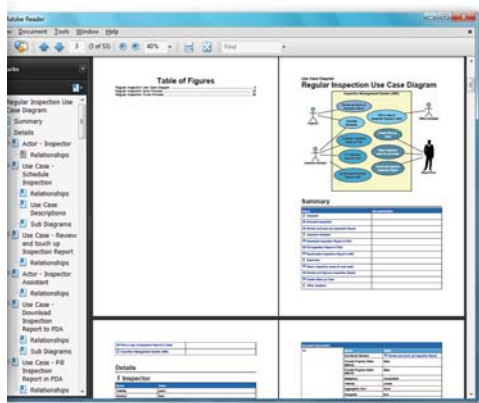


**Impact Analysis**  
 Identify effects and consequences before modifying software design, by matrix and analysis diagram.



**Diagramming Toolset**  
 Various handy visual modeling features, including voice document, sweeper, and layer.

## What Visual Paradigm Provides?



### Modeling Toolset

Various analysis and design features, including design pattern, transitor and visual diff.

### Documentation Generation

Generate up-to-date software design document in PDF, MS Word and HTML format automatically.



### Team Collaboration

Design application collaboratively with VP Teamwork Server, Subversion, Perforce and CVS.



### Interoperability & Integration

Export, import and merge XML, XMI, MS Excel format. Import Visio, Rose and ERWin project files.



### Code and DB Engineering

Generate and reverse more than 10 programming languages. Generate database from ERD.



### Supported Standards

Fully supports Unified Modeling Language (UML), entity relationship diagram (ERD).

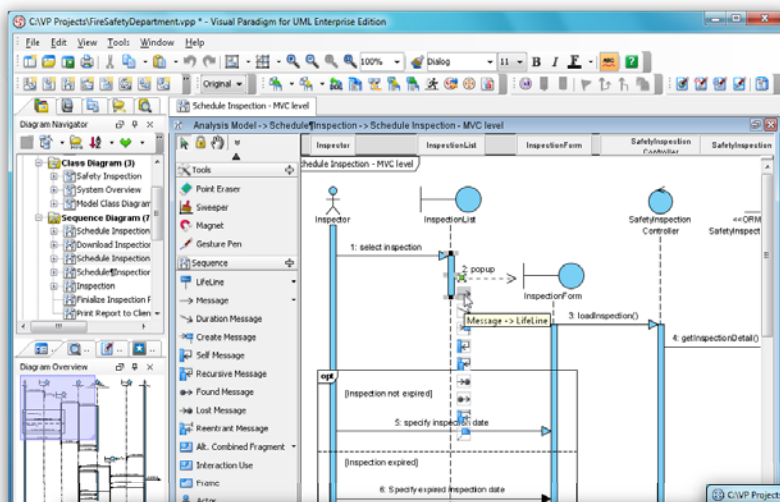
# Visual Paradigm product adoption roadmap

## How to Purchase Visual Paradigm products?

- Online credit card
- Wire transfer
- Company check
- Authorized resellers

for more information, please visit our online shop  
<http://www.visual-paradigm.com/shop/>

## Visualize interaction with UML sequence diagram



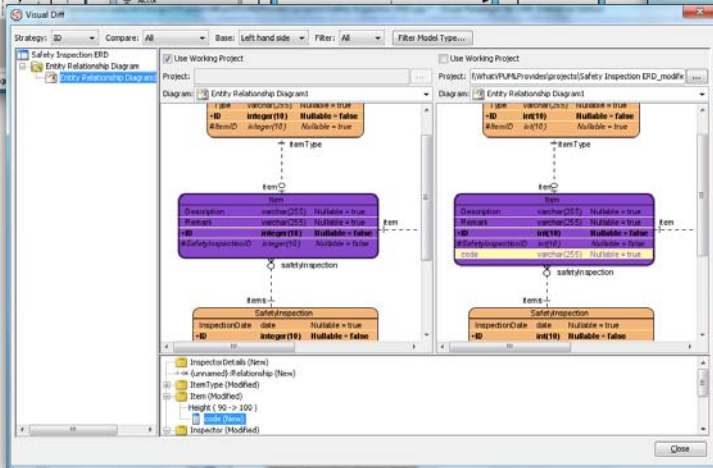
## System Requirements

- Intel Pentium III Compatible Processor at 1.0 GHz or higher.
- Minimum 512MB RAM, but 1.0 GB is recommended.
- Minimum 800MB disk space.
- Microsoft Windows (98/2000/XP/2003/Vista/7), Linux, Mac OS X, Solaris and all other Java-enabled platforms.

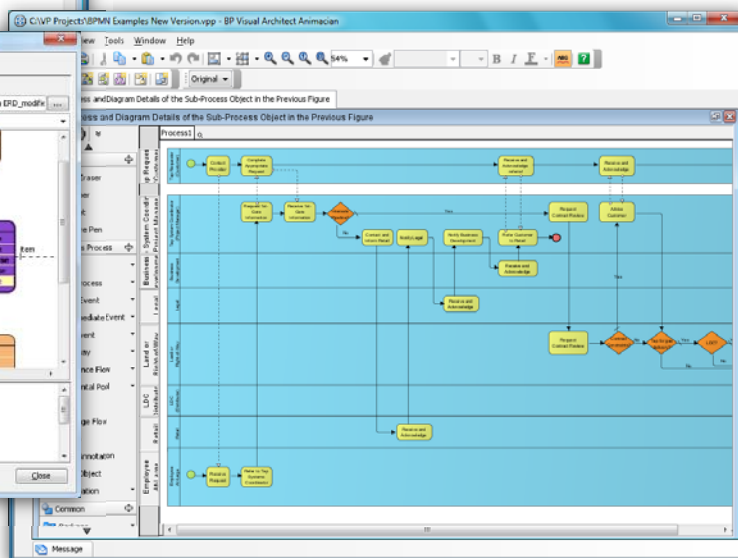
## IDE Integration

- Eclipse 3 or above
- Microsoft™ Visual Studio® .NET 2003 / 2005 / 2008 (Standard Edition or above)
- IntelliJ IDEA 4 or above (7.0 ready)
- NetBeans 4.0 or above (5.0 ready)

## Awards



Compare diagrams visually by Visual Diff



Model business process with BP-VA



Visual Paradigm

Visual Paradigm International Ltd.

<http://www.visual-paradigm.com/>

Phone Number: +852 2744 8722  
 General Information: info@visual-paradigm.com  
 Technical Support: support@visual-paradigm.com  
 Sales: sales@visual-paradigm.com